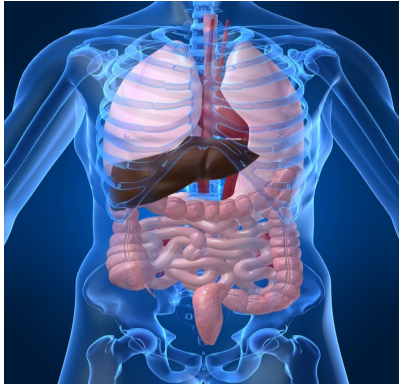


For more information about this program,  
contact us at 336-342-8140

## Health Promotion

This program reduces risk factors in adults for heart disease, stroke, cancer and injuries. We provide screening for the early detection of heart disease and stroke; and education, referral and follow-up for pre-disease or disease conditions. Cholesterol screenings are provided for persons 21 years and over and children with risk factors with a physician's order.



### Clinic Schedule Monday-Friday: 8AM - 5PM

#### **ADULT HEALTH CLINIC**

Acute Care, Preventive Care, Immunizations  
After hours appointments - 1st and 3rd Thursday of each month

#### **CHILD HEALTH CLINIC**

Acute Care, Preventive Care, Immunizations  
After hours appointments - 3rd Thursday of each month

#### **WOMEN'S PREVENTIVE HEALTH CLINIC**

Family Planning, Preventive Care, Breast/ Cervical Cancer Screening  
After hours appointments - 1st and 3rd Thursday of each month

#### **STD CLINIC**

By appointment only

#### **NUTRITION SERVICES**

Women, Infants and Children, Breastfeeding Education  
After hours appointments — Thursdays

#### **DENTAL CLINIC**

By appointment only

---

#### **Notice of Free Language Assistance:**

It is the policy of the Rockingham County Department of Public Health to provide free language interpretation services to our clients.

#### **La nota de Ayuda Libre de Idioma:**

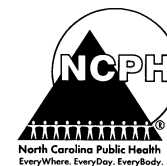
Sera la poliza del Rockingham County Department of Public Health de proporcionar los servicios gratis de interpretacion de idioma a nuestros clients.

[www.rockinghamcountydhhs.org](http://www.rockinghamcountydhhs.org)

# Adult Health Services



Rockingham County  
Division of Public Health  
PO Box 204  
Wentworth, NC 27375  
Phone: (336) 342-8140  
Fax: (336) 342-8128



## Adult Primary Care

The Advance Practice Provider (APP) offers health screenings to clients 21 years and older. Annual physical examinations and acute care are provided. Some conditions may require a physician's consultation and/or referral.

## Diabetes Control Education Classes

Health Education staff members offer Diabetes and Chronic Disease Self-Management classes to interested clients (minimum of 8 participants per class).



## Annual Well Visits or Physicals

APPs offer yearly well visits or physicals for women and men 21 years and older. Physicals may be needed for school, work, or certain activities. Clients may receive vaccinations, obtain bloodwork and follow-up, and/or receive a referral to a specialty practice as necessary.

## Acute Care

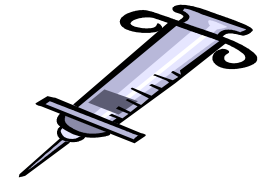
Clients are welcome to see an APP for common issues such as urinary tract infections, sore throat, allergies, etc. We strive to offer same day or next day appointments for clients wanting to be seen.



## Adult Immunizations

We provide immunizations for the following:

- Adult boosters
- Immunizations for exposure to communicable disease
- Influenza
- Pneumonia



## Screenings

We screen clients for early detection of the following:

**Diabetes**—at risk clients are screened for early detection of diabetes

**Hypertension**—detects high blood pressure

**Cholesterol**—detects high total cholesterol

We provide referral, monitoring, and follow-up according to clinic guidelines.

