



# A GUIDE TO LOCAL GOVERNMENT IN ROCKINGHAM COUNTY, NC



Rockingham  
County **NC**

YOU'RE IN A GOOD PLACE

## 2022

# TABLE OF CONTENTS

1	Contact List
2	Budget
3	Government Structure
5	Administrative Departments
6	Governing Body
6	County Manager's Office
6	Elections
7	Engineering and Public Utilities
7	Finance
8	Human Resources
8	Information Technology
8	Legal
9	Public Information Office
9	Tax
10	Register of Deeds
11	Public Safety Departments
12	Animal Shelter
12	Emergency Services
13	Sheriff's Office
14	Agriculture, Development, and Cultural Departments
15	Community Development
16	Economic Development
16	Cooperative Extension
16	Soil and Water Conservation
16	Library
17	Health and Human Services
19	Public Health
20	Social Services
20	Youth Services
20	Veterans' Services
20	Integrated Health
21	Facility Locations



# WHO TO CONTACT IN ROCKINGHAM COUNTY



## BOARD OF COMMISSIONERS

### Chairman



Kevin Berger  
(336) 932-4767  
kberger@co.rockingham.nc.us

### Vice-Chairman



Mark F. Richardson  
(336) 549-0246  
mrichardson@co.rockingham.nc.us



Charlie G. Hall, III  
(336) 932-2491  
cghall@co.rockingham.nc.us



T. Craig Travis  
(336) 432-4598  
ctravis@co.rockingham.nc.us



Don Powell  
(336) 639-3501  
dpowell@co.rockingham.nc.us

## STAFF AND ELECTED\* OFFICIALS

### County Manager



Lance Metzler  
(336) 342-8101  
lmetzler@co.rockingham.nc.us

### Information Technology



Derek Southern  
(336) 342-8359  
dsouthern@co.rockingham.nc.us

### Public Information Officer



Rebekah Pegram  
(336) 342-8342  
rpegam@co.rockingham.nc.us

### Consolidated Health & Human Services



Felissa Ferrell  
(336) 342-1394  
fferrell@co.rockingham.nc.us

### Emergency Services/911



Rodney Cates  
(336) 634-3017  
rcates@co.rockingham.nc.us

### Assistant County Manager



Paul Murray  
(336) 342-8366  
pmurray@co.rockingham.nc.us

### Geographic Information Systems



Andy Tredway  
(336) 342-8310  
atredway@co.rockingham.nc.us

### Community Development



Hiram 'Marzy' Marziano  
(336) 342-8130  
hmarziano@co.rockingham.nc.us

### Youth Services



Tara Muchini  
(336) 342-5756  
tmuchini@co.rockingham.nc.us

### Fire Marshal



Anthony Crowder  
(336) 634-3014  
acrowder@co.rockingham.nc.us

### Clerk to County Commissioners



Susan Washburn  
(336) 342-8102  
swashburn@co.rockingham.nc.us

### Tax



Todd Hurst  
(336) 342-8382  
thurst@co.rockingham.nc.us

### Central Permitting



Stacie Julian  
(336) 394-0086  
sjulian@co.rockingham.nc.us

### Veterans Services



Wanda Lane  
(336) 342-8449  
wlane@co.rockingham.nc.us

### Sheriff\*



Samuel Page  
(336) 634-3232  
spage@co.rockingham.nc.us

### County Attorney



John Morris  
(336) 342-8347  
jmorris@co.rockingham.nc.us

### Financial Services



Patricia Galloway  
(336) 347-2023  
pgalloway@co.rockingham.nc.us

### Economic Development



Leigh H. Cockram  
(336) 342-8139  
lcockram@co.rockingham.nc.us

### Public Health



Fred 'Trey' Wright  
(336) 342-8145  
fwright@co.rockingham.nc.us

### Animal Shelter



Brittany Flynn  
(336) 394-0076  
bflynn@co.rockingham.nc.us

### Engineering & Public Utilities



Ronnie Tate  
(336) 342-8104  
rtate@co.rockingham.nc.us

### Purchasing



Amanda Crumpler  
(336) 342-8111  
acrumpler@co.rockingham.nc.us

### Soil & Water Conservation



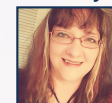
Jason Byrd  
(336) 342-8260  
jbyrd@co.rockingham.nc.us

### Environmental Health



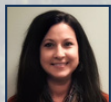
Angel Wyatt  
(336) 342-8183  
angelw@co.rockingham.nc.us

### Library



Rhonda Hooker  
(336) 627-1106  
rhooker@co.rockingham.nc.us

### Human Resources



Stephanie Kingston  
(336) 342-8115  
steph@co.rockingham.nc.us

### Register of Deeds\*



Benjamin J. Curtis  
(336) 342-8820  
bcurtis@co.rockingham.nc.us

### Cooperative Extension Service



Will Strader  
(336) 342-8230  
westrade@ncsu.edu

### Integrated Health Care



(336) 634-3009

### Board of Elections



Paula Seamster  
(336) 342-8107  
pseamster@co.rockingham.nc.us

# BUDGET

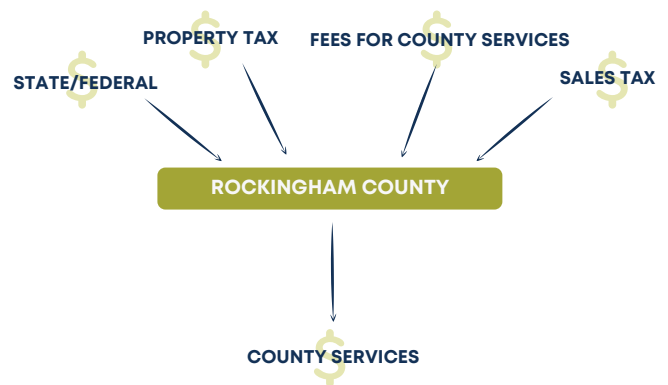
Every year, the Rockingham County Manager's Office, in conjunction with the Finance Department, develops a fiscally responsible and balanced operating budget. This budget allocates money to each County department so that they may perform their duties effectively and efficiently in an effort to provide the best quality of life to Rockingham County citizens.

## ***WHERE DOES THE COUNTY GET ITS MONEY?***

Rockingham County receives most of its funding from property taxes, sales taxes, state and federal funding, and fees for county services.

## ***WHERE DOES THE COUNTY SPEND ITS MONEY?***

The County spends money on implementing public services for Rockingham County citizens—these services are detailed throughout this report.



## ***WHO DECIDES HOW MUCH MONEY EACH DEPARTMENT GETS?***

Each department and agency submits a preliminary budget to the County Manager's office based on their expected revenues (earnings) and expenditures (spending) for the year. The County Manager's office then reviews and revises these proposed budgets and presents a balanced Recommended Budget to the Board of County Commissioners. The Board reviews and discusses the recommended budget and changes are made as needed. The Board approves and adopts the final budget.

## ***CAN THE BUDGET BE CHANGED ONCE THE BOARD OF COMMISSIONERS APPROVES IT?***

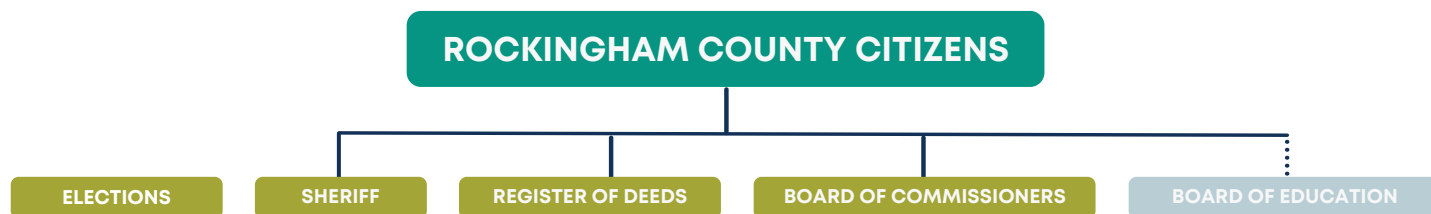
Yes, the Board can approve changes to the budget during the fiscal year.

## ***WHAT TIME PERIOD DOES THE BUDGET COVER?***

A fiscal year budget must be adopted by July 1st and lasts until June 30th of the following calendar year.



# GOVERNMENT STRUCTURE



## WHO ARE THE ELECTED OFFICIALS IN ROCKINGHAM COUNTY?

In Rockingham County, citizens elect the following County positions: the **Sheriff**, **Register of Deeds**, and **Board of Commissioners**. The Board of Commissioners is the County's general governing body with budgetary power over departments. The Sheriff and Register of Deeds are responsible for the personnel management of their staff, but the Board of Commissioners approves the funding for these two offices.

## WHAT ABOUT THE BOARD OF EDUCATION?

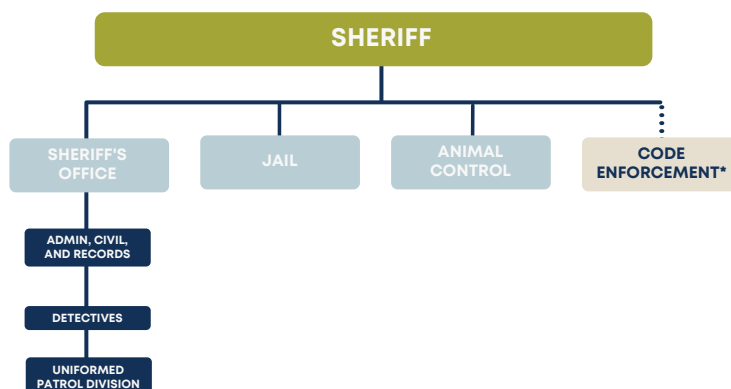
Another major governing body is the Rockingham County Board of Education. This Board is elected by Rockingham County citizens and oversees the actions of the Superintendent, contrary to the County Manager who oversees County operations. Public schools receive most of their funding through the State of North Carolina; however, the Board of County Commissioners provides partial funding to the public school system. The Board of Education is not a County department and public school employees are not considered to be County employees, but rather state employees.

## AND THE BOARD OF ELECTIONS?

Members of the Rockingham County Board of Elections are appointed by the Governor and State Board of Elections. The Board of Elections is fully funded by the County with their budget being approved by the Board of Commissioners. Elections staff answer directly to the Board of Elections.

## WHO DOES THE SHERIFF OVERSEE?

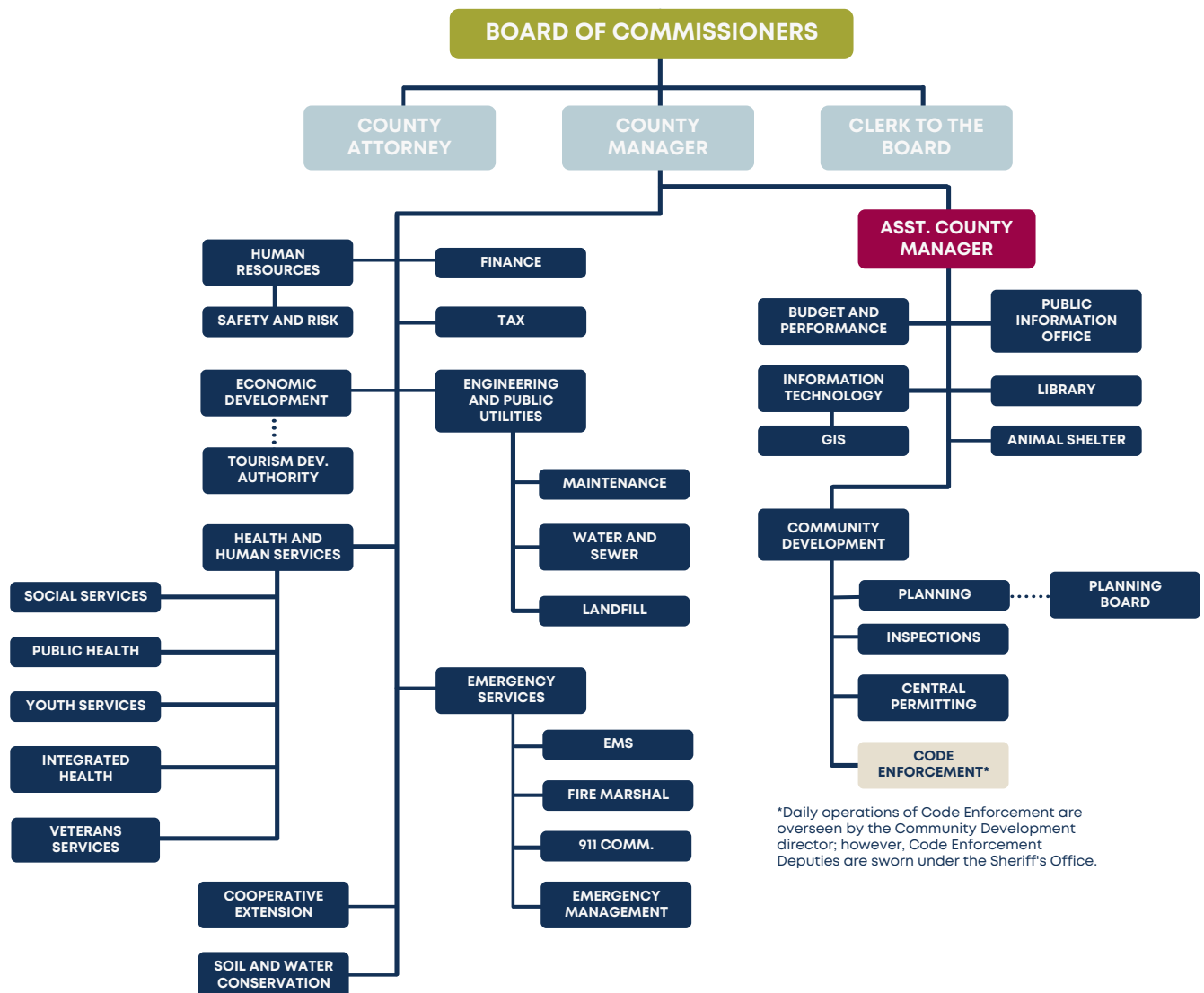
The Sheriff oversees staff in the following divisions: Jail; Admin, Civil & Records; Detectives; Uniformed Patrol Division; and Animal Control. Code Enforcement\* staff are sworn deputies, but are situated in the Community Development Office.



# GOVERNMENT STRUCTURE

## WHO DO THE BOARD OF COMMISSIONERS AND COUNTY MANAGER OVERSEE?

The Board of Commissioners appoints the County Attorney, County Manager, and Clerk to the Board. The County Manager directly manages the following departments and divisions:







# ADMINISTRATIVE DEPARTMENTS



# GOVERNING BODY

The **Board of Commissioners** is the five-member governing body of the County. The Board sets a vision for the County, which staff implement through recommending policies and administering services. The Board also sets taxes, approves the County budget, regulates land use, adopts ordinances, and serves as the liaison between the Rockingham County Government and citizens.

The **Clerk to the Board of Commissioners** is appointed and sworn into public office and strives to improve transparency between the Board and citizens. The Clerk maintains records of Board actions, prepares agendas, and maintains and publishes accurate meeting minutes.

---

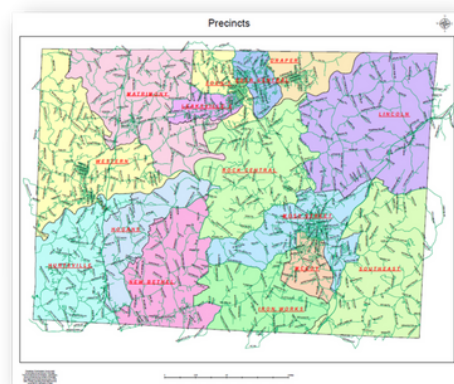
# COUNTY MANAGER'S OFFICE

The **County Manager's office** serves as the leadership for the Rockingham County Government and ensures the efficient implementation of County projects, including the annual budget, that align with the values and goals set by the Commissioners. Led by the County Manager, this team provides oversight and administration to all County departments.

---

# ELECTIONS

The **Board of Elections** is a five-member bipartisan board that oversees all elections in the County. Administrative functions of the Board of Elections are provided by a staff of three employees. Some of these functions include maintaining voter registration for County voters; conducting Federal, State, County, and municipal elections; ensuring ADA accessibility for all elections; and certifying election results.

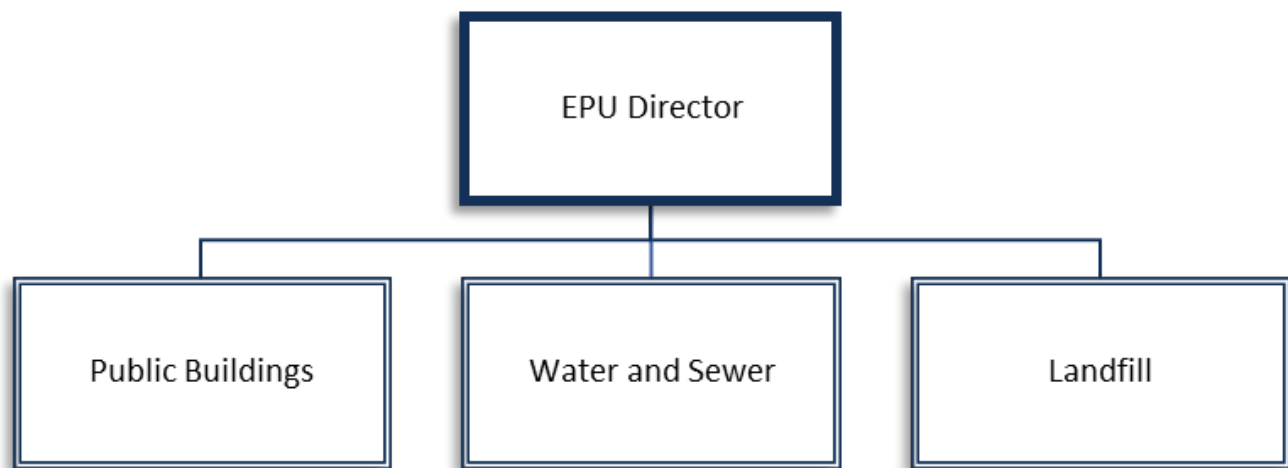


**Rockingham County  
Precinct Map**



# ENGINEERING AND PUBLIC UTILITIES

The **Engineering and Public Utilities** department performs professional engineering work related to solid waste disposal, material recycling, water distribution systems, and wastewater collection systems to ensure compliance within multiple regulatory agencies. The EPU department also oversees building and grounds maintenance for all County facilities and maintains the County landfill.



---

## FINANCE

The **Finance** Department is responsible for establishing and maintaining the financial activity of the County in compliance with generally accepted accounting principles and in accordance with Federal and state law. The duties of the office are to establish and maintain the accounting records, disburse monies, make financial reports, manage the receipt and deposit of monies, manage the county's debt service obligation, supervise investments and prepare the annual comprehensive financial report.

The **Purchasing Office** is situated within the Finance Department and provides services to all county departments by planning, organizing and directing purchasing activities in accordance with Federal and state purchasing laws. The office is also responsible for coordinating the disposition of surplus property in accordance with Federal and state laws.

# HUMAN RESOURCES

The **Human Resources** department is responsible for the provision of personnel services to County employees, such as benefits administration, maintaining employee records, and classification management; the facilitation and documentation of appropriate grievance processes to ensure the County provides adequate consideration in resolving personnel actions; recruiting high-quality employees; and maintaining an effective new hire orientation program. The HR director also serves as the EEO officer.

The **Safety and Risk Officer** is a part of the Human Resources department and manages the workers' compensation process, ensures a safe working environment through inspections of County facilities, serves as the County's ADA 504 coordinator, and develops engaging wellness events for employees. To contact the 504 coordinator, Chris Elliott, call 336-342-8265.

---

# INFORMATION TECHNOLOGY

**Information Technology** is responsible for managing all technological infrastructure in County buildings and maintaining employee technology devices such as phones and computers. Additionally, the IT department serves as the lead for the Rockingham County Broadband Initiative and operates the County's PEG channel.

The **Geographic Information Systems** division within IT provides geographic data and mapping services to County departments and the public.



**Broadband Initiative Logo**

---

# LEGAL

The Legal Department provides internal legal advice and representation to County Departments and the Board of Commissioners.



# PUBLIC INFORMATION OFFICE

The **Public Information Office** keeps Rockingham County citizens and employees informed of County projects and services through press releases, informational videos, social media posts, and the County PEG TV channel.

---

## TAX

The **Tax** Department consists of two divisions: assessment and collection. The assessment division lists, appraises and assesses all real and personal property and transfers and maintains property ownership. Collections collects all current and delinquent property taxes for the County and municipalities of Eden, Reidsville, Madison, Mayodan, and Stoneville as well as 20 fire districts.

---

# REGISTER OF DEEDS



The **Register of Deeds** is an elected official and the keeper of all county records in relation to land, marriages, births, deaths, and military records. The Register is also the chief notary for the county and where all Notary Oaths are issued and recorded. It is in the Register's Office that the county's history is preserved and stored. The first records stored in the Register's vault are dated to:

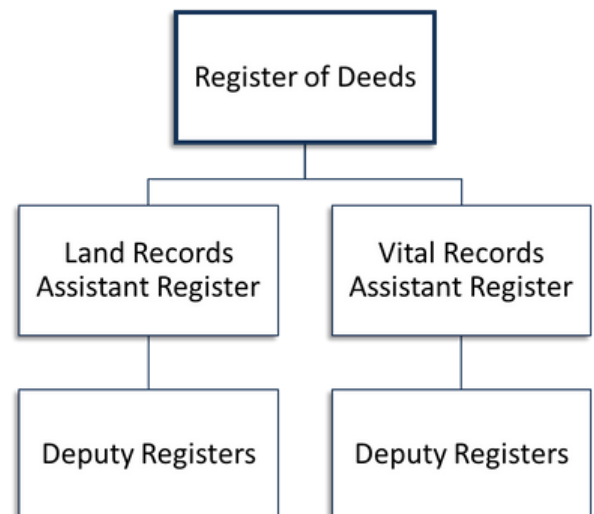
- **Land Records:** 1728 (William Byrd)
- **Births:** 1913
- **Deaths:** 1913
- **Marriage Bonds:** 1785-1868
- **Marriage License:** Oct. 18, 1867
- **Plats/Surveys:** 1919
- **Military Records:** 1948

There are two divisions in the Register of Deeds office:

- The **Land Records Division** processes records in relation to:
  - Power of Attorney
  - On line submitted E-Recordings
  - Deeds
  - Deeds of Trust
  - Assignments
  - Plats / Surveys
  - Satisfactions
  - Passport Program Manager
- The **Vital Records Division** processes records in relation to:
  - Birth Records
  - Death Records
  - Marriage Records
  - Military Records
  - Legitimations
  - Delayed Births
  - Amendments
  - Adoption Expungements



**Register of Deeds Benjamin Curtis**





# PUBLIC SAFETY DEPARTMENTS

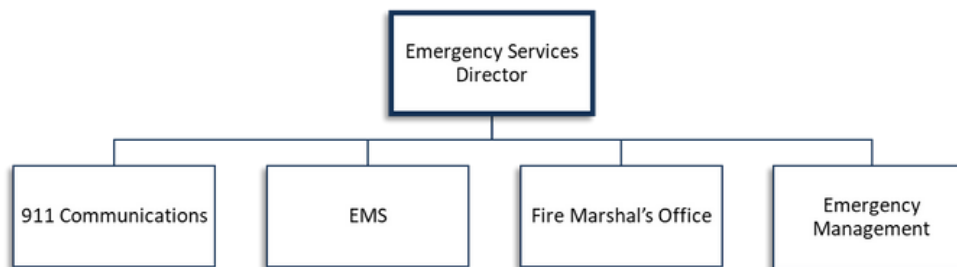


# ANIMAL SHELTER

Rockingham County **Animal Shelter** is an open-admission shelter that strives to promote and protect the animals of our community. To achieve this goal, the shelter provides rabies vaccinations and spay and neuter services to pets in the community, shelters lost and unwanted animals, adopts animals out to the public, reunites animals with their owners, and strives for a low euthanasia rate.

---

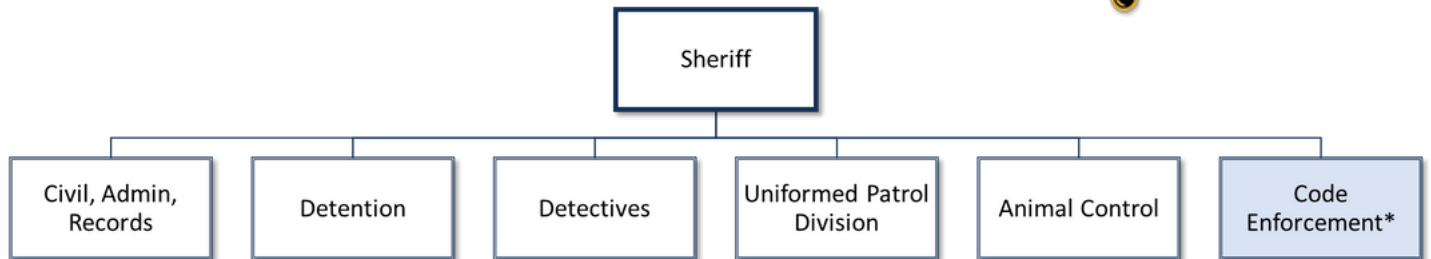
## EMERGENCY SERVICES



Emergency Services consists of four divisions–911 Communications, Emergency Medical Services (EMS), Fire Marshal’s Office, and Emergency Management–and provides comprehensive emergency services to County residents.

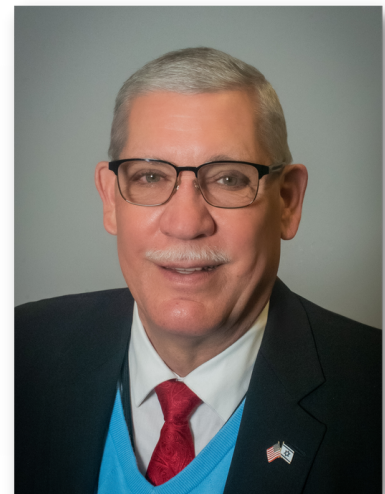
- **911 Communications** “links the public to the public safety responders” by quickly answering 911 calls and dispatching appropriate services to the emergency.
- **Emergency Medical Services** maintains bases across the County and provides first response and prehospital emergency care and transport.
- **Emergency Management** prepares for and responds to emergencies and disasters. This division maintains many County emergency plans, such as the Emergency Operations Plan and Hazard Mitigation Plan.
- The goal of the **Fire Marshal’s office** is to minimize the loss of life and property from fires, medical emergencies, and manmade and natural disasters. Some major services include NC statutory fire prevention inspections for institutions, fire prevention programs and education, code enforcement, fire suppression, emergency medical response and rescue, arson investigations, fire extinguisher training, and providing support to fire departments.

# SHERIFF'S OFFICE



The Sheriff is an elected official and the chief law enforcement officer of the county. The Sheriff's Office includes the following divisions:

- The **Civil, Admin, Records** division processes purchase permits, attempts service of civil summons, and manages and stores evidence.
- The **Detention** division maintains and operates the County Jail and oversees the inmates.
- The **Detectives** division investigates crime and aims to have a high clearance rate for index violent crimes.
- **Uniformed Patrol Division** responds to calls for service and enforces laws throughout the County.
- **Animal Control** answers calls for service and investigates animal cases such as bites.



**Sheriff Sam Page**





# AGRICULTURE, DEVELOPMENT, AND CULTURAL DEPARTMENTS

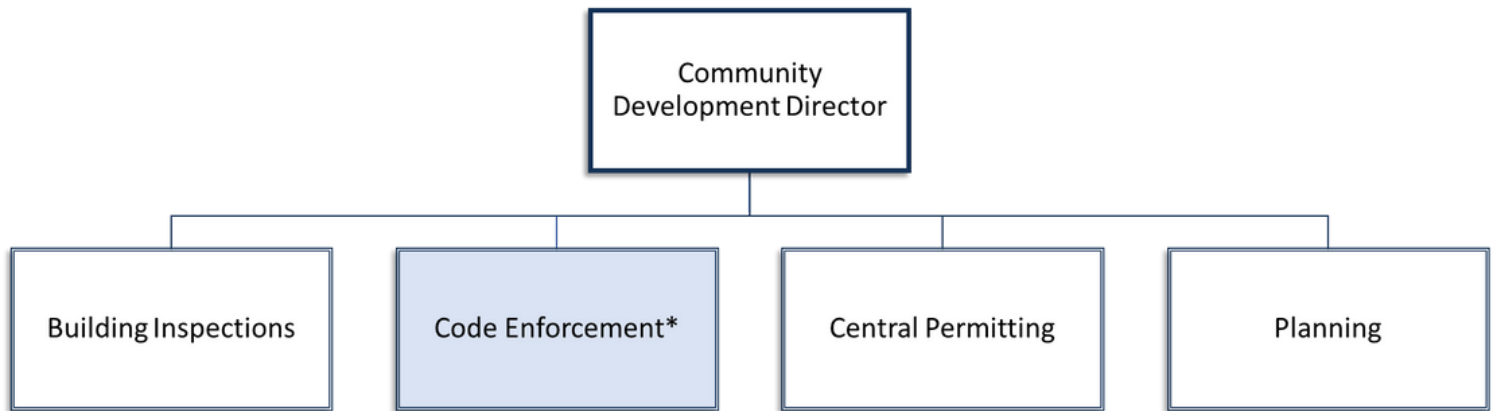


Rockingham  
County NC  
YOU'RE IN A GOOD PLACE

2022



# COMMUNITY DEVELOPMENT



The Community Development department implements the Board's vision for growth and development while being guided by the Unified Development Ordinance and the Land Use Plan. This department consists of four divisions: Inspections, Planning, Code Enforcement, and Central Permitting.

- **Inspections** performs building, electrical, plumbing, and mechanical inspections on all new construction and renovations in the County to ensure compliance with local, state, and federal codes.
- The **Planning** division manages the growth in the County by reviewing and approving zoning and site development of land. This division also manages the Land Use Plan and UDO.
- **Code Enforcement** protects the health and safety of citizens and their property by enforcing the Unified Development Ordinance and Solid Waste Ordinance and responding to and closing complaints in a timely manner.
- **Central Permitting** accepts and processes permit applications and schedules inspections for the Inspections Department, Planning Department, and Environmental Health. Central Permitting also processes payments for the Water/Sewer division of Public Utilities.

# ECONOMIC DEVELOPMENT

The **Rockingham County Center for Economic Development, Small Business & Tourism** is responsible for fostering a business- and job-friendly climate by attracting industries to the County, supporting the needs of existing industries, assisting with small business development, and developing tourism ventures.



**Henniges Automotive**

---

# COOPERATIVE EXTENSION

**Cooperative Extension** gives County residents easy access to the resources and expertise of NC State University and NC A&T State University. Through educational programs, publications, and events, Cooperative Extension field faculty deliver unbiased, research-based information to North Carolina citizens.

---

# SOIL AND WATER

The **Soil and Water Conservation District** is a subdivision of the State of North Carolina government with a responsibility to conserve soil, water, and natural resources.

---

# LIBRARY

The County operates four Libraries—Eden, Madison-Mayodan, Reidsville, and Stoneville—and an outreach bookmobile. The goal of the Library is to provide informational, educational, and recreational resources, programs and services for the citizens of Rockingham County. In this effort, the Libraries provide materials such as books and movies for checkout to the public, hosts a variety of programming for all ages, and offers genealogy reference services.





# HEALTH AND HUMAN SERVICES



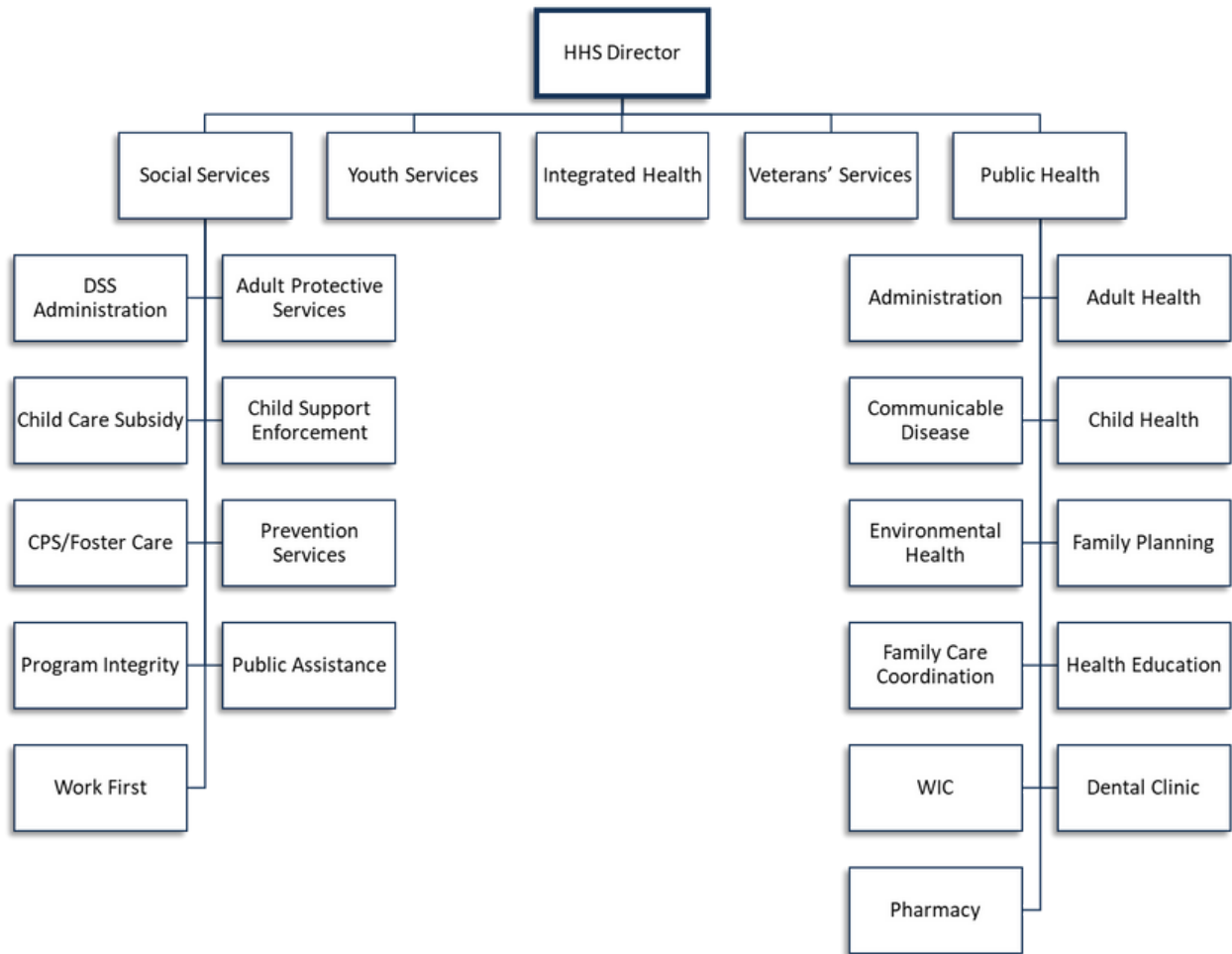
Rockingham  
County NC

YOU'RE IN A GOOD PLACE

## 2022



# HEALTH AND HUMAN SERVICES



# PUBLIC HEALTH

The Public Health Division of the Department of Health and Human Services works to ensure the health and safety of Rockingham County citizens through a variety of services:

- The **Adult Health** division provides primary care, immunizations, and cancer screenings to adult patients.
- **Child Health** provides physical and well child exams, immunizations, lab services, sick visits appointments, nutritional consultations, and developmental, vision, and hearing screenings for child patients.
- The **Communicable Disease** program tracks, investigates, and controls communicable disease in the County.
- **Family Care Coordination** provides case management services to both at-risk children and high-risk pregnant women who have medical, psychological, or social needs.
- The **Dental Clinic** provides care to patients of all ages, including exams, routine dental work, and emergency care.
- The **Environmental Health** division's goal is to prevent communicable and environment-related diseases in the community. Environmental Health provides inspections for institutions, water wells, and sewage systems and responds to environmental pollution and hazards.
- **Family Planning** provides women's health exams, offers birth control options to clients, and screens clients for sexually transmitted infections.
- The **Health Education** division communicates to the county about personal and community wellness through health education programs, school education services, and conducting Community Health Assessments.
- The Public Health division operates a **pharmacy** that fills prescriptions at low to no cost for eligible clients and works with local physicians to help patients get low-cost medications.
- **WIC** (Women, Infants, and Children) is a nutrition program for pregnant, postpartum, and breastfeeding women, and infants and children up to 5 years of age.

# SOCIAL SERVICES

The Department of Social Services helps and protects Rockingham County's most vulnerable populations through a variety of services.

- DSS provides **Economic Benefits** to clients including, but not limited to, Food and Nutrition Services, Medicaid, Special Assistance to Adults, Low-Income Energy Assistance, and TANF Emergency Assistance.
- **Adult Services** include Adult Protective Services, Prevention Services for Adults, Adult Day Care, In-Home Aide Services, Guardianship Services, and At-Risk Case Management.
- **Children's Services** include, but are not limited to: Child Protective Services, Prevention Services for Children, Child Foster Care and Reunification, Adoption Services, and Independent Living Services.
- DSS **Child Support** is available to anyone who needs help collecting child support and helps establish support obligations.



**DSS Building**

---

# YOUTH SERVICES

Youth Services provides prevention and intervention programs for at-risk and court-involved youth including counseling, clinical assessments, teen court, community service and others, in order to prevent and reduce juvenile crime.

---

# VETERANS' SERVICES

Veterans' Services provides counseling, pension, compensation, health and other local, state and federal services to veterans and their dependents.

---

# INTEGRATED HEALTH

The Integrated Health Care Program aligns existing community resources around medical care, mental health care, medical transportation and other resources to generate a shared, integrated care plan for the most vulnerable population in our community.





# FACILITY LOCATIONS



## **911 CENTER**

216 Justice Center Drive  
Reidsville, NC 27320

## **AGRICULTURAL CENTER**

525 NC Hwy 65  
Reidsville, NC 27320

## **ANIMAL SHELTER**

250 Cherokee Camp Road  
Reidsville, NC 27320

## **BOARD OF ELECTIONS**

240 Cherokee Camp Road  
Reidsville, NC 27320

## **CENTER FOR ECONOMIC DEVELOPMENT & TOURISM**

425 NC Hwy 65  
Reidsville, NC 27320

## **DETENTION CENTER**

130 Justice Center Drive  
Reidsville, NC 27320

## **EDEN LIBRARY**

598 S. Pierce Street  
Eden, NC 27288

## **EMERGENCY OPERATIONS CENTER**

150 Justice Center Drive  
Reidsville, NC 27320

## **GOVERNMENTAL CENTER**

371 NC Hwy 65  
Reidsville, NC 27320

## **HEALTH DEPARTMENT**

371 NC Hwy 65  
Reidsville, NC 27320

## **JUDICIAL CENTER**

170 NC Hwy 65  
Reidsville, NC 27320

## **LANDFILL**

281 Shuff Road  
Madison, NC 27025

## **MADISON-MAYODAN LIBRARY**

611 Burton Street  
Madison, NC 27025

## **REIDSVILLE LIBRARY**

204 W. Morehead Street  
Reidsville, NC 27320

## **SHERIFF'S OFFICE**

130 Justice Center Drive  
Reidsville, NC 27320

## **SOCIAL SERVICES**

411 NC Hwy 65  
Reidsville, NC 27320

## **STONEVILLE LIBRARY**

201 E. Main Street  
Stoneville, NC 27048

## **VETERANS AND FAMILY SERVICES**

405 NC Hwy 65  
Reidsville, NC 27320



